

MOUNT ADHESIVE CAR MOUNT



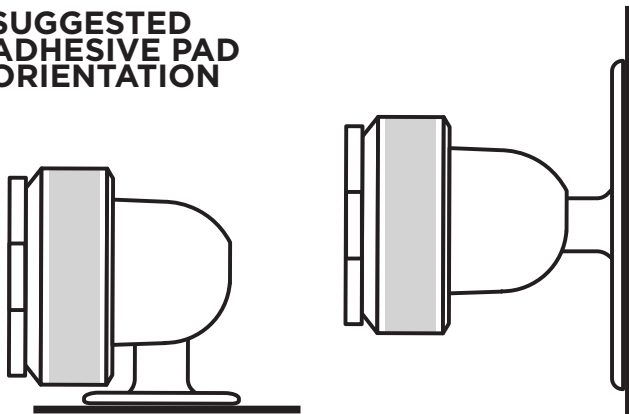
Ensure the mount doesn't interfere with essential vehicle operation (steering, braking, airbags etc).

We recommend dry fitting the mount to check optimal position.

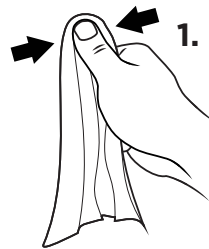
The Quad Lock™ Adhesive Car Mount uses a 3M™ VHB™ (very high bond) adhesive which bonds to most smooth, non textured, non-porous surfaces such as plastic and metal.

It will NOT adhere to rubber, silicon, polypropylene (PP), Thermo Plastic Urethane (TPU/TPE), soft touch paints or hydrophobic (water resistant) coated glass.

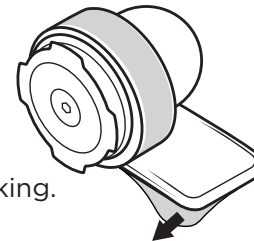
SUGGESTED ADHESIVE PAD ORIENTATION



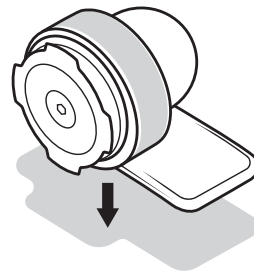
INSTALLATION



1. Clean the mounting surface with provided Prep Pad.

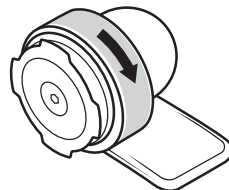


2. Peel off the adhesive backing.

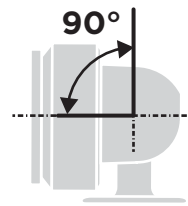


3. Position the mount on to the surface. Apply even pressure by firmly pressing down for 30-60 seconds. Full bond strength is achieved after 24hrs.

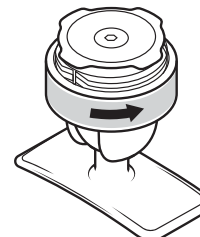
ADJUST ANGLE (OPTIONAL)



1. Loosen to adjust angle

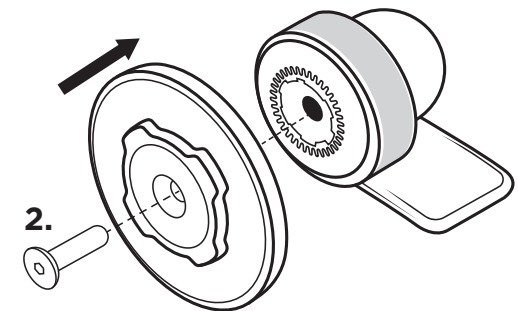
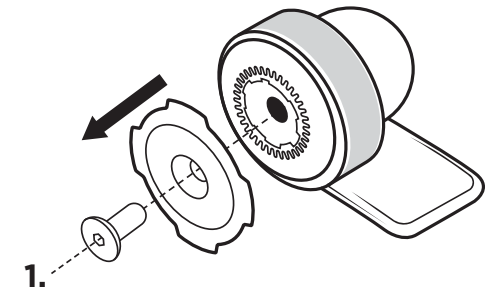


2. Change angle up to 90°



3. Tighten nut

REPLACING TOP CAP WITH A 360™ COMPATIBLE HEAD



Tightening torque
(3Nm max)

Ensure no additional force is applied on the Adhesive Car Mount when tightening the screw

RACCOLTA DIFFERENZIATA.
VERIFICA LE DISPOSIZIONI DEL TUO COMUNE.
SVUOTARE L'IMBALLAGGIO.

